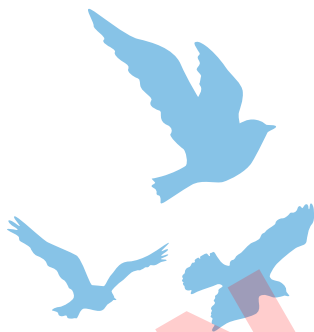


**WARNING**  
KEEP OUT OF REACH OF CHILDREN

# GRAZER GUARD



**BIRD DETERRENT**

TO PREVENT CROP DAMAGE DURING SENSITIVE PERIODS

*grochem*

Contains: 10% Calcium as Calcium Chloride.

**Batch:**

**DoM:**



NET CONTENTS

**10L**

GCGRAG/0924

**DISTRIBUTED BY:** AgriNova New Zealand Ltd,  
15 Sunlight Grove, PO Box 50-080, Porirua, New Zealand.  
Freephone: NZ 0800 447 624, AUS 1800 777 068  
Email: [grochem@grochem.com](mailto:grochem@grochem.com)  
[www.grochem.com](http://www.grochem.com)



PLEASE READ LABEL AND SAFETY DATA SHEET COMPLETELY BEFORE USE

# GRAZER GUARD

Causes skin irritation. Causes serious eye irritation.

**FIRST AID:** Call a POISON CENTRE or doctor/physician if you feel unwell. If medical advice is needed, have product container or label at hand. Take off contaminated clothing and wash before reuse.

**IF IN EYES:** Rinse continually for 15 minutes. Remove contacts, if present, early in rinse process and if safe to do so. Get medical advice or attention if eye irritation persists.

**IF ON SKIN:** Was with plenty of soap and water. If skin irritation occurs, get medical advice/attention.

**24-hour Emergency Telephone Number. For advice contact the National Poisons Centre – 0800 POSISON (0800 764 766) – or a doctor, immediately. Have a product label or container on hand.**

**For specialist advice in an emergency only, call CHEMCALL (24hrs) 0800 243 6225. In a transport emergency dial 111.**

**SAFETY DATA SHEET:** SDS is available from Grochem or [www.grochem.com](http://www.grochem.com)

**STORAGE AND TRANSPORT:** Store in a cool, dry, well-ventilated place and out of direct sunlight. Store away from foodstuffs. Store away from oxidising agents. Store away from sources of heat and/or ignition. Keep container standing upright. Keep containers closed when not in use – check regularly for leaks. Collect/contain any spillage. Do not carry on a passenger service vehicle.

**HANDLING ADVICE:** Keep away from food, drink and animal feeding stuffs. When using do not eat, drink or smoke. Wash hands prior to eating, drinking or smoking. Avoid contact with clothing. Avoid eye contact and skin contact. Avoid inhalation of vapour, mist or aerosols.

## DIRECTIONS FOR USE:

### NOTES:

Use with a non-ionic surfactant to ensure complete coverage.

DO NOT apply within 1 week of harvest, as may have a subtle effect on taste.

DO NOT apply to seed crops destined for bird seed.

DO NOT apply to kiwifruit after the start of flowering.

Ensure that eyewash stations and safety showers are close to the workstation location. Wear overalls, gloves, chemical goggles, respirator. Use with adequate ventilation. If inhalation risk exists wear organic vapour/particulate respirator meeting the requirements of AS/NZS 1715 and AS/NZS 1716. Wash contaminated clothing and other protective equipment before storing or re-using.

**SMALL SPILLS:** Wear protective equipment to prevent skin and eye contamination. Avoid inhalation of vapours or dust. Wipe up with absorbent (clean rag or paper towels). Collect and seal in properly labelled containers or drums for disposal.

**LARGE SPILLS:** Clear area of all unprotected personnel. Slippery when spilt. Avoid accidents, clean up immediately. Wear protective equipment to prevent skin and eye contamination and the inhalation of vapours. Work up wind or increase ventilation. Contain – prevent run off into drains and waterways. Use absorbent (soil, sand or other inert material). Collect and seal in properly labelled containers or drums for disposal. If contamination of crops, sewers or waterways has occurred advise local emergency services.

**DISPOSAL:** Dispose of product by using as directed on this label or at an approved landfill. Triple-rinse empty container into spray tank and deliver to an appropriate recycling depot.

**CONDITIONS OF SALE:** As no control can be exercised over the manner in which or the conditions under which this product is used, all conditions and warranties expressed or implied, other than those required by statute are excluded. No responsibility will be accepted for any damage or injury whatsoever arising from the storage, handling, application or use of this product.

Approved Pursuant to the HSN0 Act 1996, under the Fertilisers – Subsidiary Hazard Group Standard HSR002571. See [www.epa.govt.nz](http://www.epa.govt.nz) for approval conditions.

**COMPATIBILITY:** CAUTION: Mixing with magnesium containing fertilisers as combination may form insoluble gypsum, reducing efficacy and blocking filters and nozzles.

**TANK MIXING WITH AGRICHEMICALS:** Test prior to full application. Test compatibility in a small container by combining all the ingredients in the same ratio as anticipated use. Test crop safety with application of a small volume to a limited area of the crop.

CROP	RATE/HA	CRITICAL COMMENTS
Kiwifruit	3 L	Use prior to flowering on varieties sensitive to bird damage. Apply as a dilute application with a non-ionic surfactant to ensure complete coverage. Apply prior to the start of bird damage. Re-apply after 2 weeks, or after rain events, whichever occurs first.
Grapes	2-3L	Apply from first signs of bird damage and repeat applications every 7-14 days or post rain event. Grazer Guard should be used in conjunction with alternative bird scaring tactics leading up to harvest.
Berry fruit including Strawberries	2-3L	Apply from first signs of bird damage and repeat applications every 7-14 days or post rain event. Grazer Guard should be used in conjunction with alternative bird scaring tactics leading up to harvest.
Grain and Seed Crops	1-2 L	Apply prior to the start of bird damage. Applications should be made every 7 days, depending on bird pressure. Use in conjunction with a non-ionic surfactant. Grazer guard should be used in conjunction with other Bird scaring activities prior to harvest.
Seedling crop emergence and vegetable transplants	1-2 L	Apply to crop headland and crop adjacent to water ways where Duck and Pukeko are of concern. Apply at 7-day intervals until plants become resistant to bird damage. Use in conjunction with other bird scaring activities.